

CENTERVILLE Ranch

1800 Sq. Ft.

Now Introducing the CENTERVILLE!



• 3 Bedrooms • 2 Baths • 1800 Sq. Ft.

This home comes standard with all the great Innovation specs PLUS!!!

- ✓ 2040 Fixed and Casement Windows at Kitchen
- ✓ LVP Flooring at Living Room
- ✓ Desk Area in Hall
- ✓ Shiplap Fireplace Accent Wall
- ✓ Farmhouse Sink with Coil Faucet at Kitchen and Utility
- ✓ Built-In Refrigerator Cabinet
- ✓ Glass Panel Tiled Shower
- ✓ Linen Cabinet At Master Bath
- ✓ His and Hers Closets Featuring Double Shelving
- ✓ Butler Pantry Area
- ✓ Furniture-Style Island
- ✓ Covered Porch Area

Phone: 814.764.5555, 800.216.7849

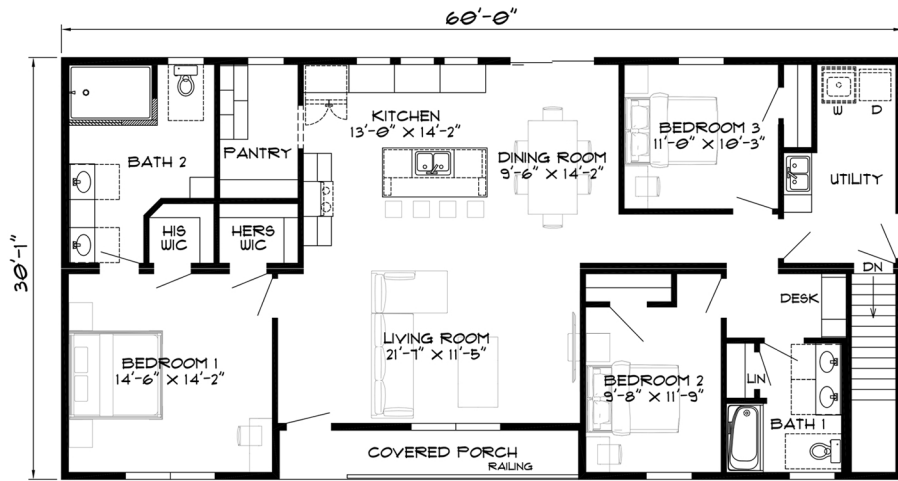
Fax: 814.764.5852

Website: smihomes.com

INNOVATION
SERIES

SMI
structural modular
innovations

CENTERVILLE



INNOVATION
SERIES



Open Floor Plan



Large Master Bath



SMI
structural modular
innovations

Phone: 814.764.5555, 800.216.7849

Fax: 814.764.5852

Website: smihomes.com