

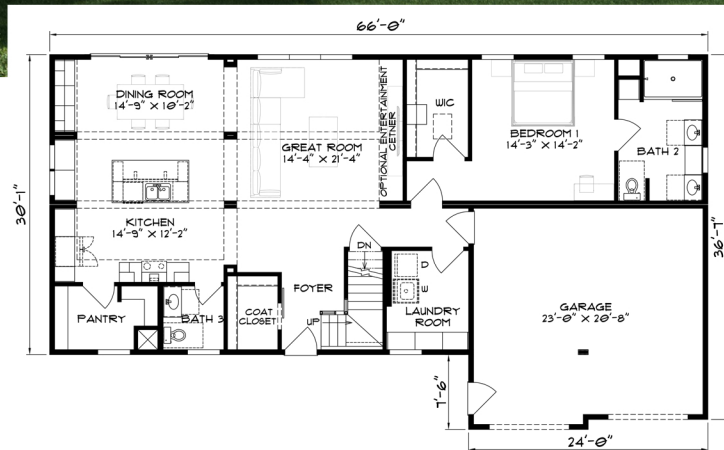
# ASHEVILLE #3

## 2-Story

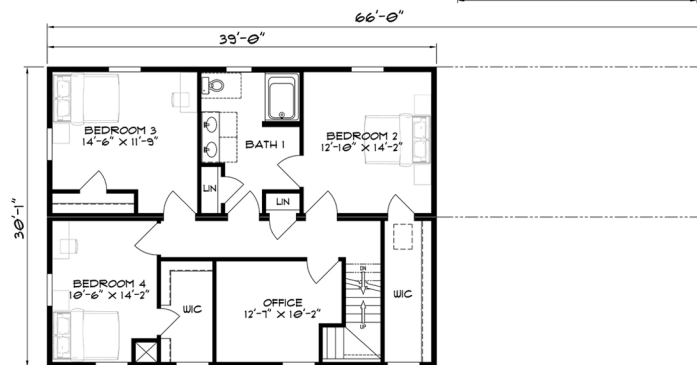
1950 Sq. Ft.



**INNOVATION**  
SERIES



1st Floor



2nd Floor

See page 2 for an optional 2nd story floor plan

• 4 Bedrooms • 2.5 Baths • 1950 Sq. Ft.

Phone: 814.764.5555, 800.216.7849

Fax: 814.764.5852

Website: [smihomes.com](http://smihomes.com)



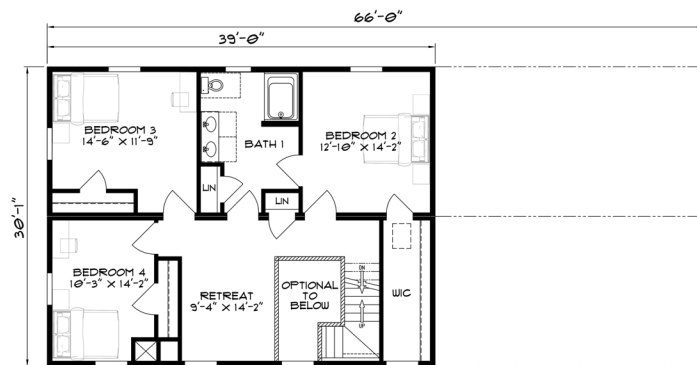
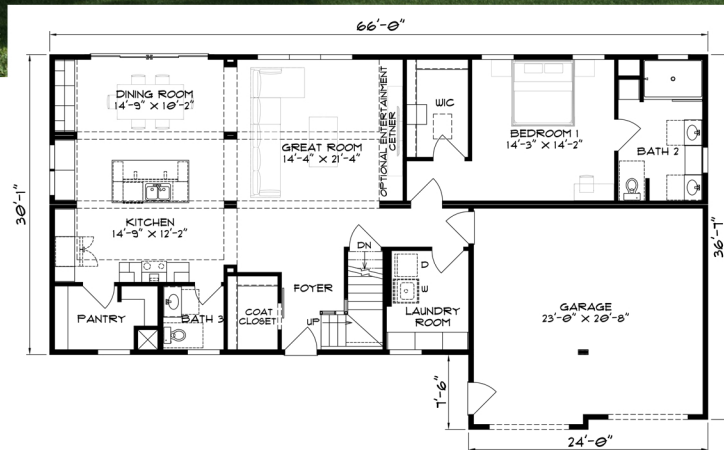
# ASHEVILLE #3

## 2-Story

1950 Sq. Ft.



**INNOVATION**  
SERIES



See page 1 for  
an optional  
2nd story floor  
plan

• 4 Bedrooms • 2.5 Baths • 1950 Sq. Ft.

Phone: 814.764.5555, 800.216.7849

Fax: 814.764.5852

Website: [smihomes.com](http://smihomes.com)

**SMI**  
structural modular  
innovations