

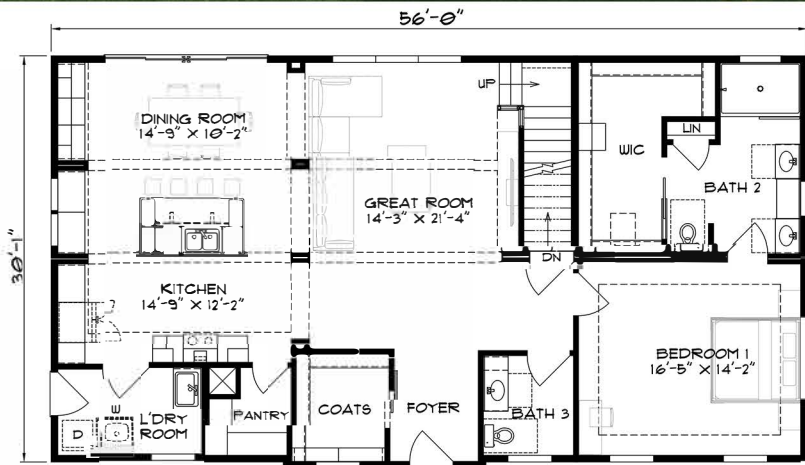
ASHEVILLE

2-Story

2850 sq. ft.



INNOVATION
SERIES



Front View - 1st Floor

• 4 Bedrooms • 3 Baths • 2850 Sq. Ft.

Phone: 814.764.5555, 800.216.7849

Fax: 814.764.5852

Website: smihomes.com

SMI
structural modular
innovations

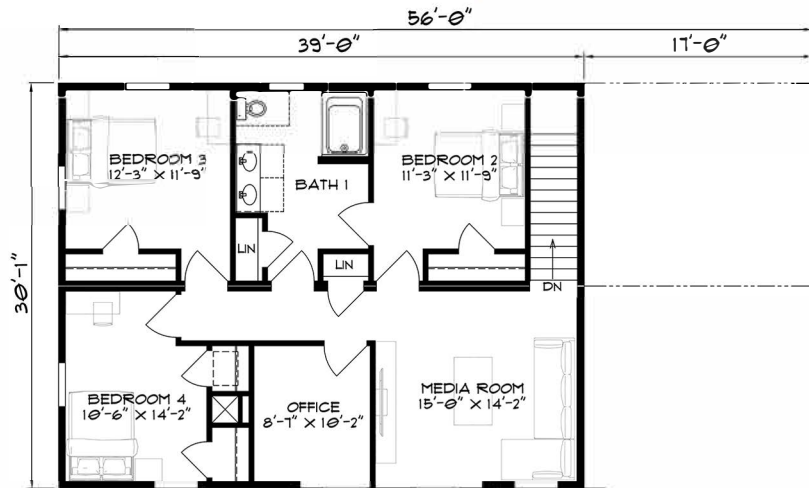
ASHEVILLE

2-Story

2850 sq. ft.



INNOVATION
SERIES



Rear View - 2nd Floor

· 4 Bedrooms · 3 Baths · 2850 Sq. Ft.

Phone: 814.764.5555, 800.216.7849

Fax: 814.764.5852

Website: smihomes.com

