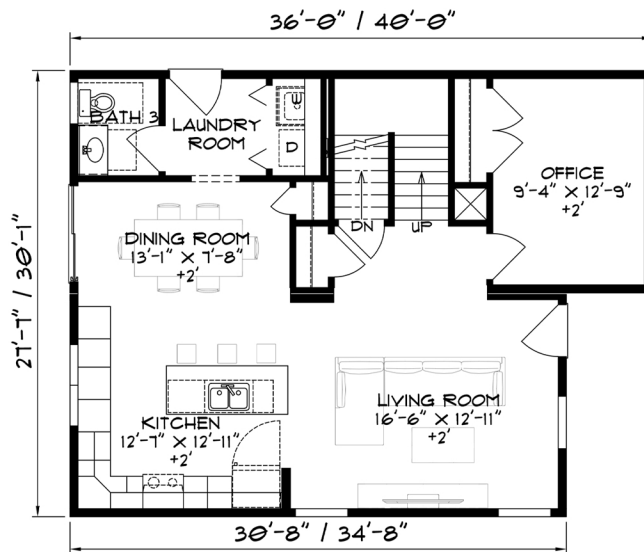


INNOVATION SERIES

FAYETTEVILLE

2-Story

1876/2250 Sq. Ft.



- **3 Bedrooms**
- **2 Baths**
- **1876/2250 Sq. Ft.**

Fayetteville Features

Open Floor Plan
 Kitchen Island
 Dining Room
 Home Office
 Master Bedroom
 w/Large Walk-in Closet
 Master Bath w/Shower
 Laundry Room
 Basement Ready
 Garage Ready

